



Kamera gern  
anschalten

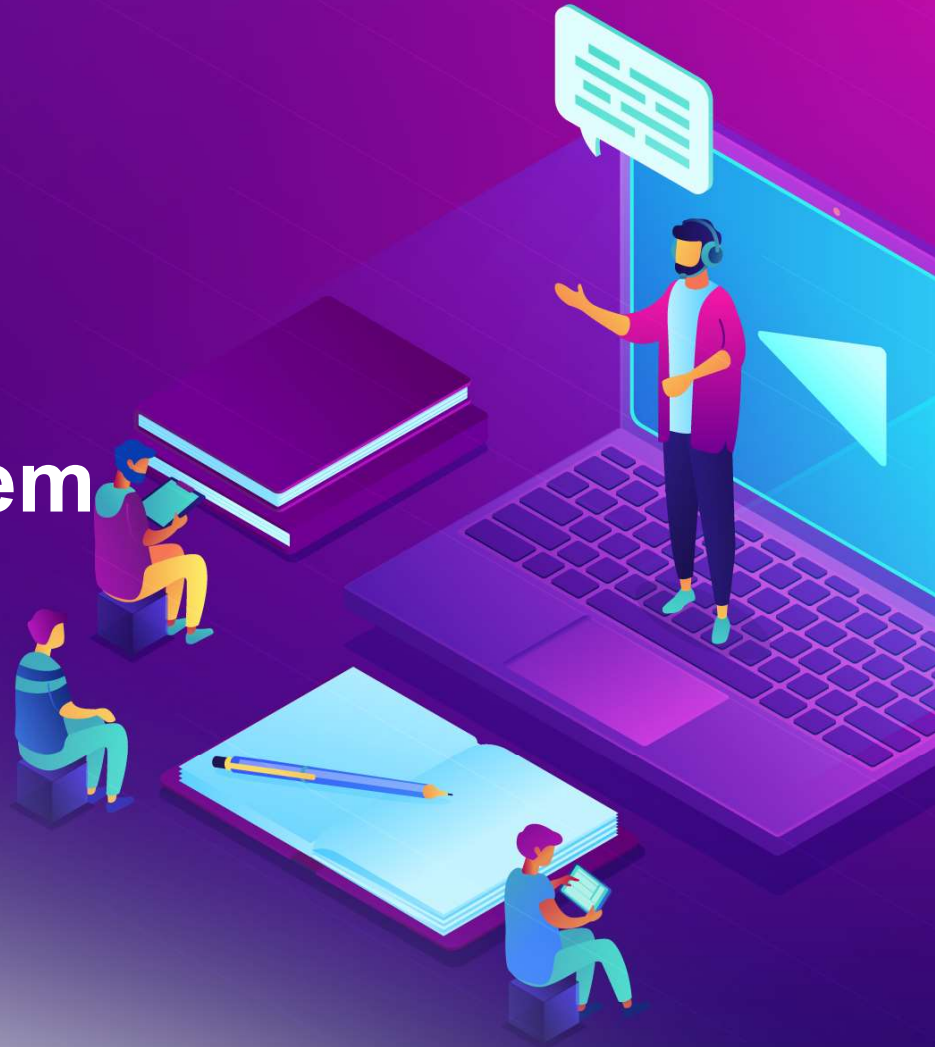


Ton vorerst  
ausschalten

IT FÜR DIE SCHULE VON MORGEN

# Lenovo Server Thinksystem

Marcel Höhne Field Technical Sales



# Das Serverportfolio der Lenovo

ThinkSystem ST series	ThinkSystem SR series	ThinkSystem Mission Critical	ThinkSystem SE series	ThinkSystem HPC / AI																																								
 ST50 V2 ST250 V2	<table border="1"><thead><tr><th>1U</th><th>2U</th></tr></thead><tbody><tr><td> SR645 V3</td><td> SR665 V3</td></tr><tr><td> SR645</td><td> SR665</td></tr><tr><td> SR635 V3</td><td> SR655 V3</td></tr><tr><td> SR630 V3</td><td> SR650 V3</td></tr><tr><td> SR630 V2</td><td> SR650 V2</td></tr><tr><td> SR250 V2</td><td></td></tr></tbody></table>	1U	2U	 SR645 V3	 SR665 V3	 SR645	 SR665	 SR635 V3	 SR655 V3	 SR630 V3	 SR650 V3	 SR630 V2	 SR650 V2	 SR250 V2		<table border="1"><thead><tr><th>SR950</th><th>SR950 V3</th></tr></thead><tbody><tr><td> SR950</td><td> SR950 V3</td></tr><tr><td colspan="2">4U up to 8 CPUs</td></tr><tr><td> SR860 V2</td><td> SR860 V3</td></tr><tr><td colspan="2">4U up to 4 CPUs</td></tr><tr><td> SR850 V2</td><td> SR850 V3</td></tr><tr><td colspan="2">2U up to 4 CPUs</td></tr></tbody></table>	SR950	SR950 V3	 SR950	 SR950 V3	4U up to 8 CPUs		 SR860 V2	 SR860 V3	4U up to 4 CPUs		 SR850 V2	 SR850 V3	2U up to 4 CPUs		 SE350  SE350 V2  SE360 V2  SE450  SE455 V3	<table border="1"><thead><tr><th>GPU Optimized</th></tr></thead><tbody><tr><td> SR670 V2</td></tr><tr><td> SR675 V3</td></tr></tbody></table> <table border="1"><thead><tr><th>Water Cooled</th></tr></thead><tbody><tr><td> DW612</td><td> DW612S</td></tr><tr><td> SD650 V3</td><td> SD650-N V2</td><td> SD665-N V3</td></tr><tr><td> SD650-I V3</td><td> SD665 V3</td><td> SD650 V2</td></tr></tbody></table>	GPU Optimized	 SR670 V2	 SR675 V3	Water Cooled	 DW612	 DW612S	 SD650 V3	 SD650-N V2	 SD665-N V3	 SD650-I V3	 SD665 V3	 SD650 V2
1U	2U																																											
 SR645 V3	 SR665 V3																																											
 SR645	 SR665																																											
 SR635 V3	 SR655 V3																																											
 SR630 V3	 SR650 V3																																											
 SR630 V2	 SR650 V2																																											
 SR250 V2																																												
SR950	SR950 V3																																											
 SR950	 SR950 V3																																											
4U up to 8 CPUs																																												
 SR860 V2	 SR860 V3																																											
4U up to 4 CPUs																																												
 SR850 V2	 SR850 V3																																											
2U up to 4 CPUs																																												
GPU Optimized																																												
 SR670 V2																																												
 SR675 V3																																												
Water Cooled																																												
 DW612	 DW612S																																											
 SD650 V3	 SD650-N V2	 SD665-N V3																																										
 SD650-I V3	 SD665 V3	 SD650 V2																																										

## Fabrik 2023 in Ungarn (nahe Budapest) eröffnet

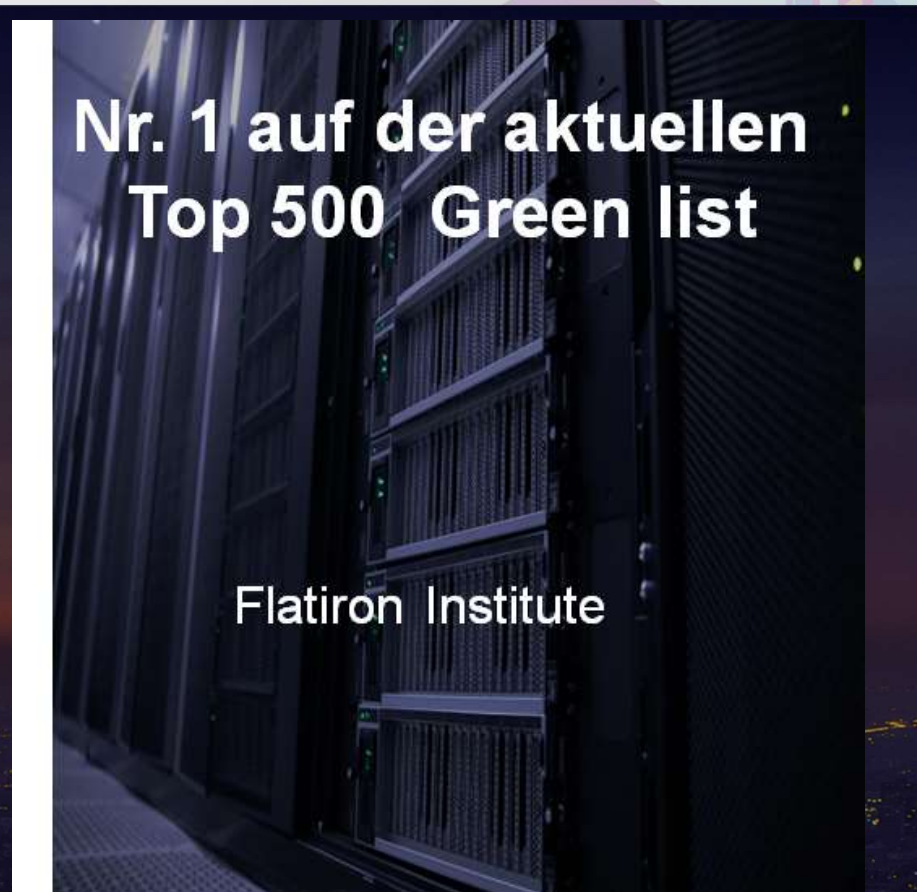
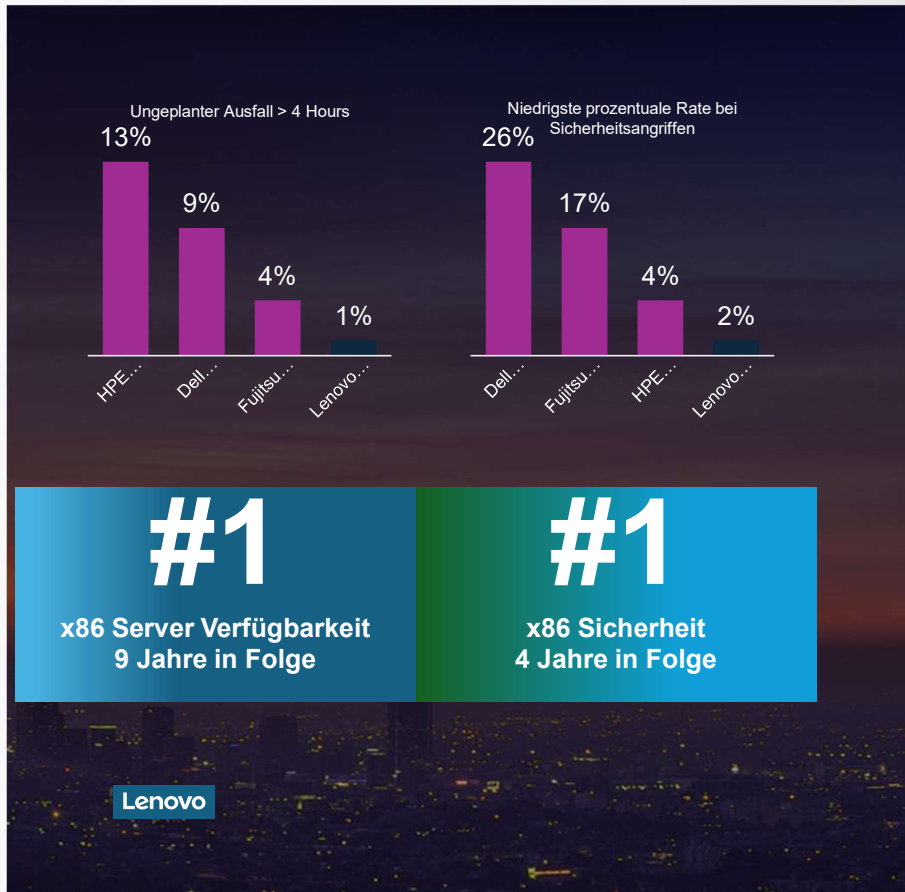
### Made in Europe for Europe

- Lenovo delivers customized solutions in the heart of Europe from our manufacturing plant in Ullo, Hungary.
- Our Ullo plant shipped one million workstations & servers in its first year, enabling deeper collaboration, transparency, and understanding with Lenovo customers across the EMEA region.





# Warum gerade Server von Lenovo



# Servermodelle für den Einsatz in den Schulen

## Rackserver SR650 V3

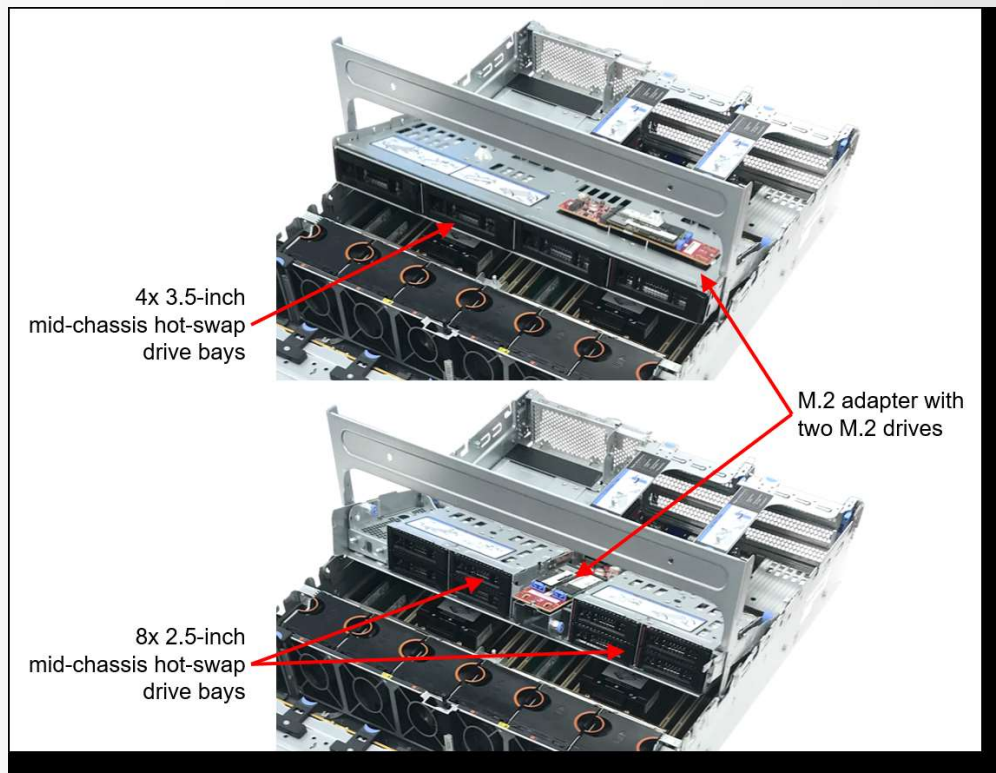


Feature	SR650 V3 Offering
Form Factor	• 2S2U
Processor	• 4th gen intel® Xeon® Scalable processors, up to 350W
GPU	<ul style="list-style-type: none"> <li>• 3x DW GPU up to 300W each</li> <li>• 8x SW GPU up to 75W each</li> <li>• 6x SW GPU &gt;75W each</li> </ul>
Memory	<ul style="list-style-type: none"> <li>• 32 TruDDR5 RDIMMs including 16x 3DXpoint (CrowPass) PMem</li> <li>• TruDDR5 ECC LR/3DS/RDIMM, 4400/4800MHz</li> <li>• 1DCP @4800MHz; 2DPC@4400MHz</li> </ul>
Storage	<ul style="list-style-type: none"> <li>• Up to 20x 3.5", 40x 2.5" drive bays</li> <li>• Front: up to 12x 3.5" / 24x 2.5", hot-swap</li> <li>• Mid (internal): up to 4x 3.5" / 8x 2.5", hot-swap*</li> <li>• Rear: up to 4x 3.5" / 8x 2.5", 2x 7mm boot drive, hot-swap</li> <li>• Up to 36x NVMe drives (20 from onboard connection)</li> <li>• Up to 32x EDSFF 3.S (Post SS)</li> <li>• Internal 2x M.2 boot drives</li> <li>• Direct NVMe and onboard SATA w/ SW RAID (R0, 1, 5, 10)</li> <li>• Common building blocks including PCIe RAID and HBA adapters</li> <li>• Optimized for cold storage with up to 14 PCH SATA ports</li> <li>• The SR650 V3 does not support VROC SATA RAID (RSTe) or VROC NVMe RAID.</li> </ul>
Cooling	• Redundant Hot-Swap Fans (Standard & High Performance)
Networking	• LOM via OCP & PCIe Adapters
Management	<ul style="list-style-type: none"> <li>• XClarity Hardware Controller, XCC2</li> <li>• Redfish support</li> </ul>
Front IO and LED	<ul style="list-style-type: none"> <li>• 2 PCIe Gen4 slots + 1x OCP 3.0 Slot (Optional)</li> <li>• Selectable LED or LCD</li> <li>• Optional front VGA port</li> <li>• 1x USB 3.0 and 1x USB 2.0 with XCC connection for mobile device</li> </ul>
Rear IO and LED	<ul style="list-style-type: none"> <li>• 10 PCIe slots (Gen5/Gen4)</li> <li>• VGA Port</li> <li>• 1x OCP 3.0 slot</li> <li>• 2x USB 3.0; 1x USB 2.0</li> <li>• Optional Serial Port</li> <li>• 1GbE Dedicated MGMT Port</li> </ul>
Power Supplies	<ul style="list-style-type: none"> <li>• Dual Redundant AC &amp; DC (multiple wattages)</li> <li>• Platinum &amp; Titanium</li> <li>• 750W PT/TT, 1100W PT/TT, 1800W PT/TT, 2400W PT, 2600W TT, 1100W -48VDC.</li> </ul>
Services	<ul style="list-style-type: none"> <li>• Standard 1-year &amp; 3-year base warranty</li> <li>• Upgrade option for 4<sup>th</sup> &amp; 5<sup>th</sup> years</li> </ul>



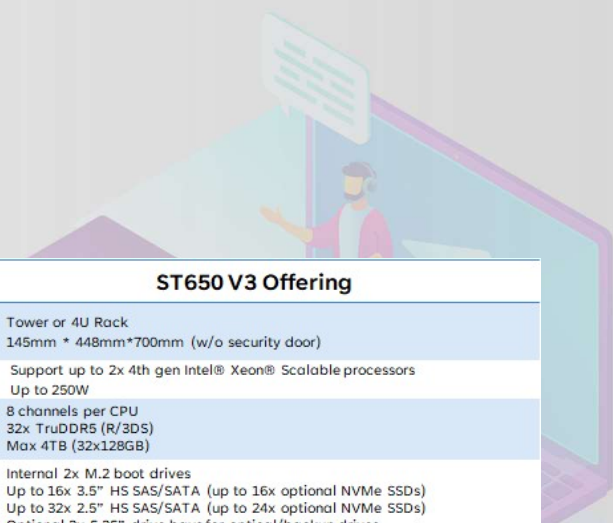
# Servermodelle für den Einsatz in den Schulen

## Rackserver SR650 V3





# Servermodelle für den Einsatz in den Schulen



## Towerserver ST650 V3



Auch als Rackvariante nutzbar

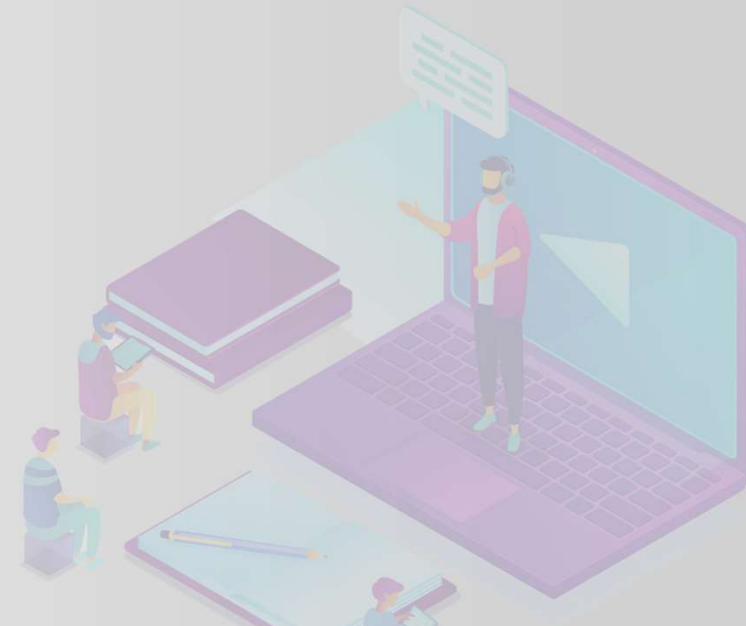


Feature	ST650 V3 Offering
Form Factor	<ul style="list-style-type: none"> <li>Tower or 4U Rack</li> <li>145mm * 448mm*700mm (w/o security door)</li> </ul>
Processor	<ul style="list-style-type: none"> <li>Support up to 2x 4th gen Intel® Xeon® Scalable processors</li> <li>Up to 250W</li> </ul>
Memory	<ul style="list-style-type: none"> <li>8 channels per CPU</li> <li>32x TruDDR5 (R/3DS)</li> <li>Max 4TB (32x128GB)</li> </ul>
Storage	<ul style="list-style-type: none"> <li>Internal 2x M.2 boot drives</li> <li>Up to 16x 3.5" HS SAS/SATA (up to 16x optional NVMe SSDs)</li> <li>Up to 32x 2.5" HS SAS/SATA (up to 24x optional NVMe SSDs)</li> <li>Optional 2x 5.25" drive bays for optical/backup drives</li> </ul>
RAID Controller	<ul style="list-style-type: none"> <li>Onboard SATA and NVMe support with <b>VROC RAID</b></li> <li>PCIe Gen3, Gen4 and Gen5 (when available) RAID/HBA adapters</li> <li>Wide range of 8-, 16- and 32-port RAID adapters</li> <li>8- and 16-port HBAs</li> <li>NVMe Retimer adapters for additional 12x NVMe</li> </ul>
Networking	<ul style="list-style-type: none"> <li>2x 10GbE embedded</li> <li>1GbE dedicated Management port</li> </ul>
PCI-e	<ul style="list-style-type: none"> <li>Up to 9 slots total</li> <li>5x PCIe Gen5 slots (three x16 slots and two x8 slots)</li> <li>4x PCIe Gen4 slots (one x16 slots and three x8 slots)</li> <li>12x onboard NVMe connectors (12 x Gen4)</li> <li>Separate M.2 adapter support</li> </ul>
GPU	<ul style="list-style-type: none"> <li>Support up to 4x DW GPU or 8x SW GPU adapters</li> </ul>
Management and Security	<ul style="list-style-type: none"> <li>XClarity Controller 2 (Standard or Platinum)</li> <li>Full XClarity software suite including XClarity Administrator</li> <li>Optional intrusion switch and lockable door</li> <li>Support for External Diagnostics Handset</li> <li>Pluggable RoT Module</li> </ul>
Front IO and LED	<ul style="list-style-type: none"> <li>LEDs: Power Button / ID Button / System Health LED</li> <li>1x USB 3.1; 1 x USB 2.0 with XCC connection for mobile device</li> </ul>
Rear IO and LED	<ul style="list-style-type: none"> <li>4 x USB; 1 x VGA, 1x COM port, 1x External LCD Diagnostics Handset Port (Optional)</li> <li>Error LED//NMI Bottom</li> </ul>
Cooling	<ul style="list-style-type: none"> <li>Redundant Hot Swap Fan, optional 4x standard / performance fans.</li> </ul>
Power Supply	<ul style="list-style-type: none"> <li>2x Hot-swap PSUs up to 2600W Titanium</li> </ul>

## Sondermodell Edge Server SE350



- Einsatz in unklimatisierten Räumen
- Staub







Kamera gern  
anschalten



Ton jetzt  
anschalten

# Vielen Dank für Ihre Aufmerksamkeit, jetzt ist Zeit für Ihre Fragen!



Sie erreichen uns auf jederzeit über unsere Homepage [www.system.ag](http://www.system.ag)

